



MARIANO MARCOS STATE UNIVERSITY

Bids and Awards Committee

INVITATION TO MAKE AN OFFER: Negotiated Procurement

21-011-6

THE PROJECT: Refurbishment of Career Hub Center, Student Center Building
Number of Working Days: 75 calendar days
ABC: P899,273.55

1. The Mariano Marcos State University (MMSU), with offices at Quiling Sur, City of Batac, Ilocos Norte, invites the public to make an offer to furnish all labor, materials, tools and equipment necessary and proper for the implementation of the above Project as per approved designs, plans and drawings.
2. This process is in accordance with Section 53 of R.A. 9184, the Government Procurement reform Act and Section 53.9 of the Implementing Rules and Regulations where interested and qualified contractors are to submit proposals.
4. The offer must be in writing submitted at the address below on or before **November 24, 2021; 2:00 PM** together with the following documents:
 - a) The amount of the offer in writing duly signed by the person making the offer, indicated in numbers and figures.
 - b) The particulars of the offer as to labor, materials, tools, equipment and other work details.
 - c) Documents in support of the legal, technical and financial capability of the person making the offer, which documents shall be confirmed and verified (3 copies).
5. It is understood that any offer may be accepted or rejected, or the process invalidated, at any time prior to contract award, without liability to anyone.
6. Documents for this procurement may be secured from the MMSU BAC Secretariat at the address below or downloaded from the MMSU website or from the Philippine Government Electronic Procurement System (PhilGEPS) website.
7. For questions and inquiries, please write or email the University President, thru the BAC Chair, at the address indicated below.

Mariano Marcos State University
Quiling Sur, City of Batac
www.mmsu.edu.ph _____

November 19, 2021

NATHANIEL R. ALIBUYOG
BAC CHAIR

Received: _____
Received: _____
Received: _____

Rm 105 FEM Hall, MMSU, #16S Quiling Sur, City of Batac, Ilocos Norte
☒ bac@mmsu.edu.ph ☎ (077) 600-0459 www.mmsu.edu.ph



STARS
RATING SYSTEM



ISO 9001

Republic of the Philippines
MARIANO MARCOS STATE UNIVERSITY
Batac City 2906, Ilocos Norte

Project Information Document

PROJECT TITLE: Refurbishment of Career Hub Center, Student Center Building

PROJECT LOCATION: MMSU Batac Campus, Ilocos Norte

The construction procedures shall be done in accordance with standard specifications and in full compliance with the approved plans and this **Project Information document**.

Pertinent notes appearing in the **Contract Plans or Drawings** shall also be considered as part and parcel of this **Project Information Document**. Such notes shall take precedence over the **General Specifications**.

1. Roughing Works

This item shall consist of labor for the Clearing the area prior to construction and installation and cleaning of the area after the project is completed. The Contractor is mandated to assist to where existing equipment in the area are to be temporarily placed. Coordination to the Project in-charge from the University or end-user is a must.

2. Millworks

This item shall consist of furnishing all materials, hardware, tools, labour and services necessary for complete fabrication and installation of aluminium glass partitions and the type and size as shown on the Plans and in accordance with the specifications. The contractor is required to submit sample of materials to be used prior to fabrication and installation under this scope of work. Aluminum Glass partition shall be measured and paid for on the basis of number of sets completely installed and accepted by the *Engineer*.

3. Furnitures

This item of work includes different types of furniture. This includes material, fabrication, delivery and installation.

Bulletin Board:

1.20m x 2.40m Wall Signboard, Printed LED Lightbox Signs. Prior to purchasing the Contractor is advised to coordinate to the project incharge or the enduser for approval of the said material.

Lounge Area:

Conference Room Table and Chairs (for 8 persons), Couch Set with mini table, Decorative Partition Wall, 0.50m x 1.8m x 0.65mheight Floor Mounded Cabinet/Drawer/File Storage. Prior to purchasing the Contractor is advised to coordinate and show sample or brochures to the project incharge or the enduser for approval of the said material.

Counseling Area:

Chairs, 2.10m x 1.00m Conference Table, 0.60m dia. Glass table with Stand. Prior to purchasing the Contractor is advised to coordinate and show sample or brochures to the project incharge or the enduser for approval of the said material.

Computer Room:

Modular Partition and Tables with chairs (for 10 person). Prior to purchasing the Contractor is advised to coordinate and show sample or brochures to the project incharge or the enduser for approval of the said material.

Benches:

2.20m length Metal Bench with backrest. Prior to purchasing the Contractor is advised to coordinate and show sample or brochures to the project incharge or the enduser for approval of the said material.

After all the works have been completed, the surrounding immediate areas affected in the prosecution of the project shall be cleaned and cleared of all excess materials and debris, temporary structures, facilities and utilities used during the construction period.

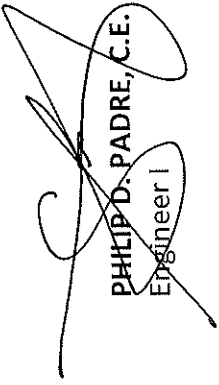
A. Time is a very important factor in the implementation of this project and as such, all works indicated in the plans, specifications and in this document shall be completed within - **75- calendar days** from receipt of the Notice to Proceed;

B. The contractor, before turning over the completed project to the University, shall clean the areas covered by the contract and dispose all construction debris and wastes;

1. The Approved Budget for the Project to be bid is **Eight Hundred Ninety-Nine Thousand Two Hundred Seventy-Three and 55/100 Pesos (Php. 899,273.55).**

2. All bids must be submitted to the BAC Chairman, MMSU-Batac, Ilocos Norte not later than _____.

Prepared by:

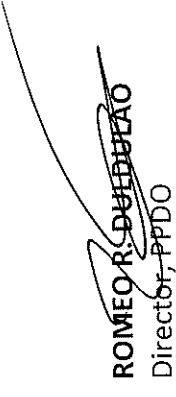


PHILIP D. PADRE, C.E.
Engineer I

Checked by:

AIDA V. CABANG
Architect IV, Chief Planning

Recommend Approval:



ROMEO R. DURBIDAO
Director, PPDO



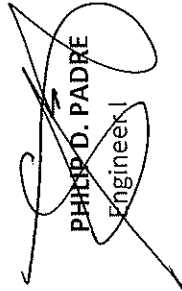
SPECIFICATION

Project Title: Rehabilitation of Career Hub Center

Project Location: MMSU, City of Batac, Ilocos Norte

ITEM NO.	DESCRIPTION
I.	Roughing Works Site Preparation Clearing and Cleaning
II.	Millworks Materials, hardware, tools, labour and services necessary for fabrication and installation Aluminum Glass Partition Aluminum Glass Doors
III.	Furnitures Bulletin Board: 1.20m x 2.40m Wall Signboard, Printed LED Lightbox Signs (Sticker design and presentation designs to be provided by the end-user) Lounge Area: Conference Room Table and Chairs (for 8 persons) Couch Set with mini table Decorative Partition Wall 0.50m x 1.8m x 0.65mheight Floor Mounded Cabinet/Drawer/File Storage Counseling Area: Chairs 2.10m x 1.00m Conference Table 0.60m dia. Glass table with Stand Computer Room: Modular Partition and Tables with chairs (for 10 person) Benches: 2.20m length Metal Bench with backrest

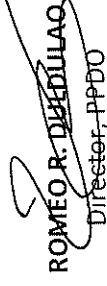
Prepared By:


PHILIP D. PADRE
 Engineer

Checked by:


AIDA V. CABANG
 Architect IV, Chief Infra.

Recommending Approval:

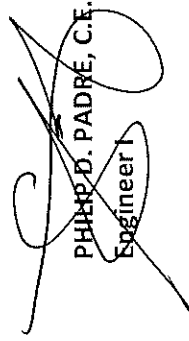

ROMEO R. DE DILALAO
 Director, PPDO

Title: Refurbishment of Career Hub Center
 Location: MMSU, City of Batac, Ilocos Norte

Bill of Quantities

Item No.	Description	Quantity	Unit
I.	Roughing Works		
	Building Permits and Clearances	1	lot
II.	Millworks		
	Aluminum Glass Partition		
	Aluminum Glass Doors	1	lot
III.	Furnitures		
	<i>Bulletin Board:</i>		
	1.20m x 2.40m Wall Signboard, Printed LED Lightbox Signs (Sticker design and presentation designs to be provided by the end-user)	2	units
	<i>Lounge Area:</i>		
	Conference Room Table and Chairs (for 8 persons)	1	set
	Couch Set with mini table	1	set
	Decorative Partition Wall	1	set
	0.50m x 1.8m x 0.65mheight Floor Mounded Cabinet/Drawer/File Storage	1	set
	<i>Counseling Area:</i>		
	Chairs	20	sets
	2.10m x 1.00m Conference Table	1	set
	0.60m dia. Glass table with Stand	6	sets
	<i>Computer Room:</i>		
	Modular Partition and Tables with chairs (for 10 person)	1	set
	<i>Benches:</i>		
	2.20m length Metal Bench with backrest	4	sets

Prepared by:


 PHHR D. PADRE, C.E.
 Engineer I



INDIVIDUAL PROGRAM OF WORK

Name/Location of Project: REFURBISHMENT OF CAREER HUB CENTER, Student Center Building		Appropriations: Source of Fund Issued Obligated Authority: Released: Calendar Days to Complete: Desirable Starting Date:	
---	--	---	--

Project Category: 0 Vertical Construction

Project Description:

Minimum Equipment Requirement Description	No.	Technical Personal Required Description	Number

ESTIMATED COST OF PROPOSED WORK

Item No.	Description	% of Total	Unit	Quantity	Direct Cost	Indirect Cost	Adjusted Cost	Total Cost
I	Roughing Works							
II	Milworks							
III	Furnitures							
	Total							



Republic of the Philippines
MARIANO MARCOS STATE UNIVERSITY
 City of Batac, 2906, Ilocos Norte

DETAILED ESTIMATES

Item No.: I		Quantity:		lot	
Description: Roughing Works		Unit:		Unit Price	Sub-Total
MATERIALS COST	Description	Quantity	Unit	Unit Price	Sub-Total
	Total Materials Cost			Sub-Total	
				Unit Cost	
EQUIPMENT COST	Description	Quantity	Unit	Unit Price	Sub-Total
	Total Equipment Cost			Sub-Total	
				Unit Cost	
LABOR COST	Description	Quantity	Unit	Unit Price	Sub-Total
	Total Labor Cost			Sub-Total	
				Unit Cost	

DIRECT COST:

DIRECT UNIT COST:

Plus Indirect Cost:
 OCM
 VAT
 Indirect Unit Cost:

Total Direct and Indirect Cost:

Republic of the Philippines
MARIANO MARCOS STATE UNIVERSITY
 City of Batac, 2906, Ilocos Norte

DETAILED ESTIMATES

Item No.:	Quantity:	Unit	Unit Price	Sub-Total	
II	Millworks	lot		1.00	
MATERIALS COST	Partition: 7.20m x 2.80m Aluminum Analok with Frosted Sticker (Entire Glass Area), with 1/2"thick Clear Glass	units			
	1.65m x 2.80m Aluminum Analok with Frosted Sticker (Entire Glass Area), with 1/2"thick Clear Glass	units			
	1.65m x 2.10m Aluminum Analok with Frosted Sticker (Entire Glass Area), with 1/2"thick Clear Glass	units			
	1.25m x 2.10m Aluminum Analok with Frosted Sticker (Entire Glass Area), with 1/2"thick Clear Glass	units			
	4.50m x 2.80m Aluminum Analok with Frosted Sticker (Entire Glass Area), with 1/2"thick Clear Glass	unit			
	Doors: 0.80m x 2.10m Framless Glass Door (1/2" Thick glass)	units			
	Note: This Includes Material, Fabrication, Delivery and Installation				-
	Total Materials Cost				Sub-Total -
					Unit Cost -
					-
EQUIPMENT COST	Description	Quantity	Unit Price	Sub-Total	
					Sub-Total
					Unit Cost
					Sub-Total
LABOR COST	Description	Quantity	Unit Price	Sub-Total	
					Sub-Total
					Unit Cost
					Sub-Total

DIRECT COST:
 DIRECT UNIT COST:

Plus Indirect Cost:
 OCM
 VAT
 Indirect Unit Cost:

Total Direct and Indirect Cost:

Republic of the Philippines
MARIANO MARCOS STATE UNIVERSITY
 City of Batac, 2906, Ilocos Norte

DETAILED ESTIMATES

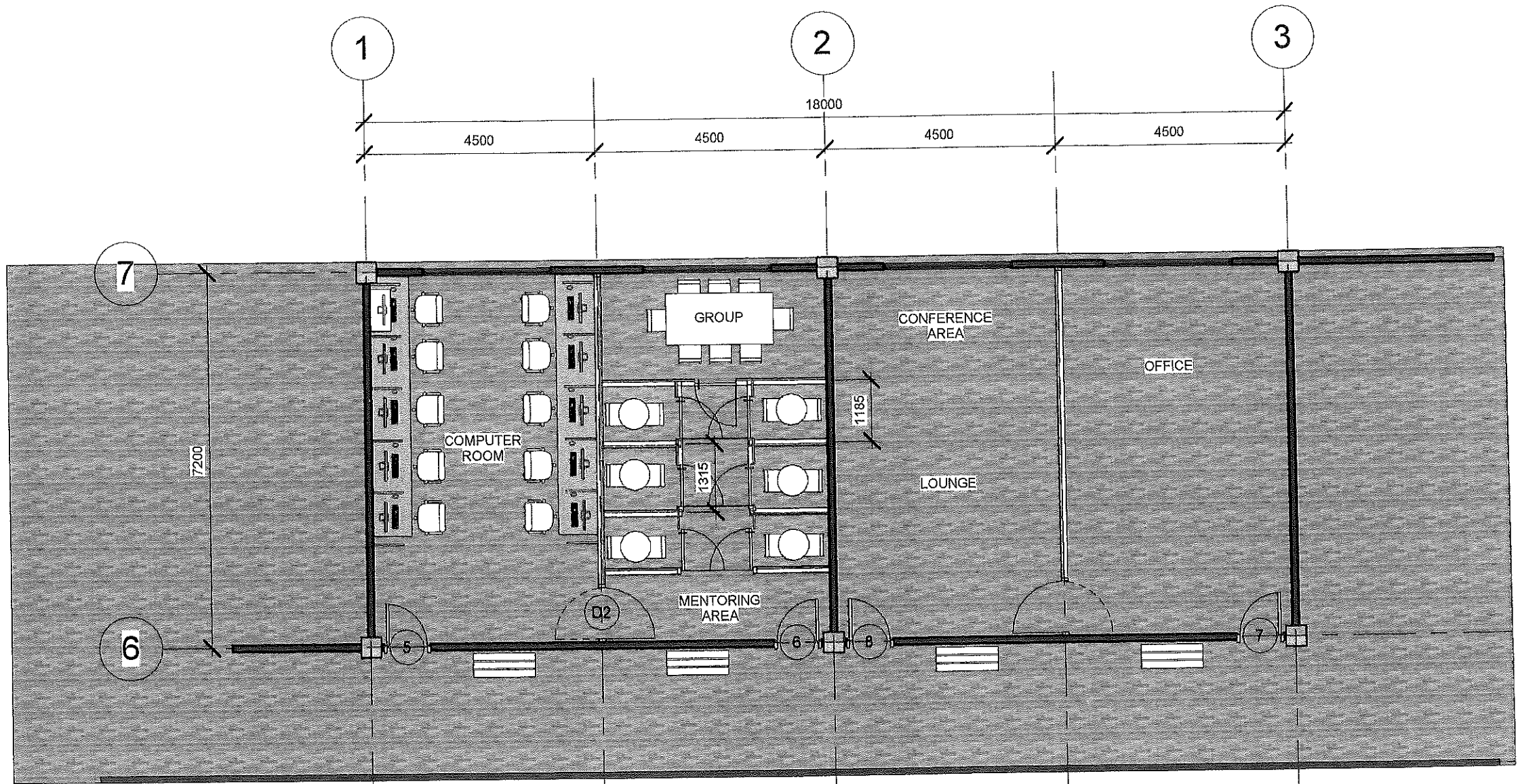
Item No.: III	Quantity:	1.00
Description: Furnitures	Unit:	lot

Description	Quantity	Unit	Unit Price	Sub-Total
MATERIALS COST				
Bulletin Board: 1.20m x 2.40m Wall Signboard, Printed LED Lightbox Signs (Sticker design and presentation designs to be provided by the end-user)		units		
Lounge Area: Conference Room Table and Chairs (for 8 persons)		set		
Couch Set with mini table		set		
Decorative Partition Wall		set		
0.50m x 1.8m x 0.65mheight Floor Moundcted Cabinet/Drawer/File Storage		set		
Counseling Area: Chairs		sets		
2.10m x 1.00m Conference Table		sets		
0.60m dia. Glass table with Stand		sets		
Computer Room: Modular Partition and Tables with chairs (for 10 person)		sets		
Benches: 2.20m length Metal Bench with backrest		sets		
Note: This Includes Material, Fabrication, Delivery and Installation				
Total Materials Cost			Sub-Total	
			Unit Cost	
EQUIPMENT COST				
Description	Quantity	Unit	Unit Price	Sub-Total
Total Equipment Cost			Sub-Total	-
			Unit Cost	-
LABOR COST				
Description	Quantity	Unit	Unit Price	Sub-Total
Total Labor Cost			Sub-Total	
			Unit Cost	


DIRECT COST:
 DIRECT UNIT COST:

Plus Indirect Cost:
 OCM
 VAT
 Indirect Unit Cost:

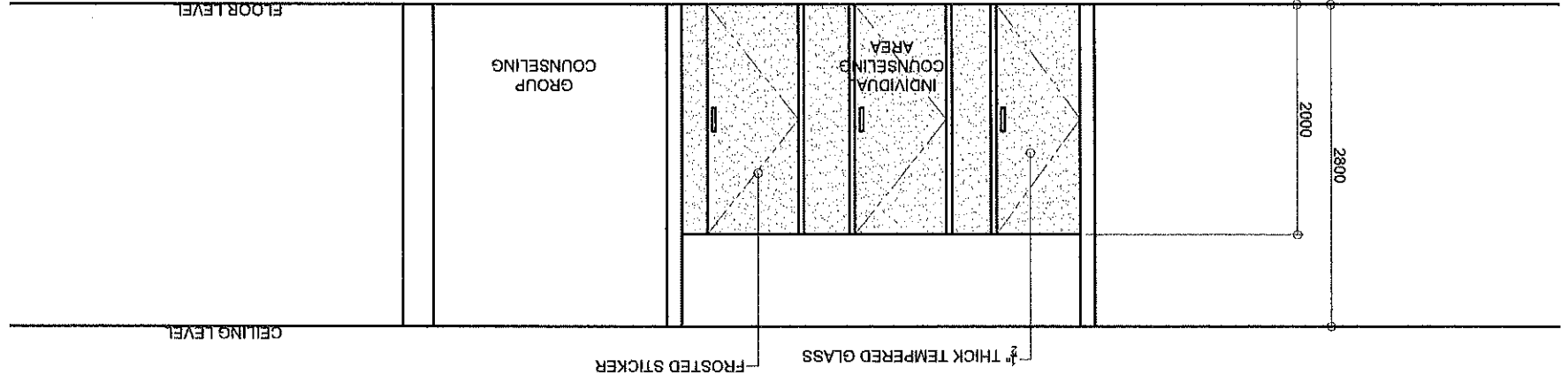
Total Direct and Indirect Cost:



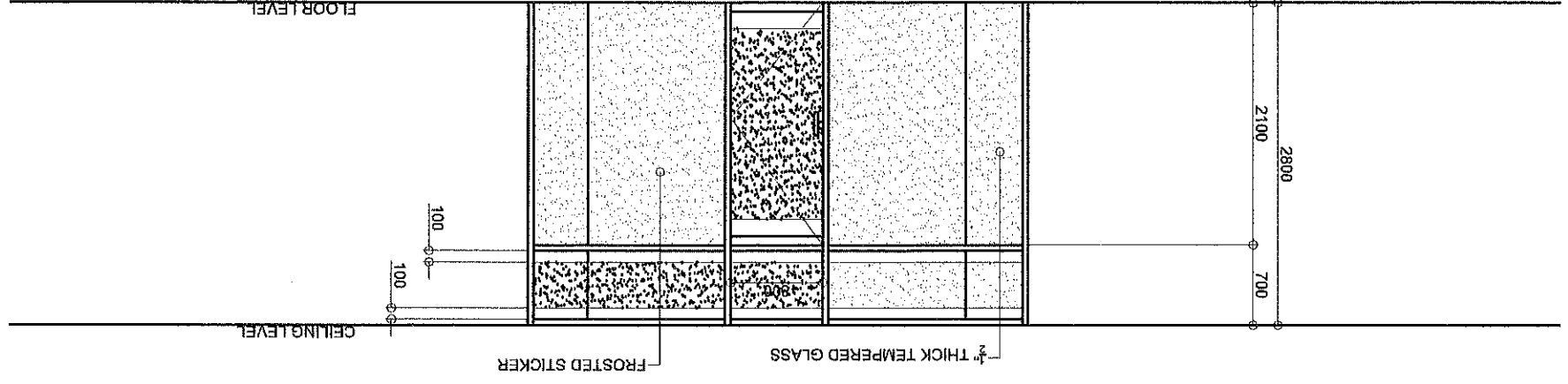
FLOOR PLAN

PROJECT TITLE: REFURBISHMENT OF CAREER HUB CENTER		CONFORMS:		SHEET CONTENT:		SHEET NO.	
LOCATION: MMSU-CRL, CITY OF BATAAC, ILOCOS NORTE		RECOMMENDING APPROVAL:		APPROVED BY:		PAGE NO.	
		PHILIP D. PADRE ENGINEER I		AIDA V. CABANG ARCHITECT IV, CHIEF INFR.		ROMEO R. DULALAO DIRECTOR, PPDD	
CHECKED/REVIEWED BY:		GERALDEEN B. PASCUAL END-USER		SHIRLEY C. AGRUPIS UNIVERSITY PRESIDENT			

PARTITION 4 DETAIL



PARTITION 3 DETAIL





REFURBISHMENT OF CAREER HUB CENTER

LOCATION: MMSU-CAL, CITY OF BATAQ, ILOCOS NORTE

CHECKED/REVIEWED BY:

AIDA V. CABANO
ARCHITECT IV, CHIEF IN-CHARGE

RECOMMENDING APPROVAL:

ROMEO R. DULDALAO
DIRECTOR, PDD

APPROVED BY:

GERALDEEN B. PASQUAL
END-USER

SHEET CONTENT:

SHEET NO.

AS SHOWN

SHIRLEY C. AGRUPIS
UNIVERSITY PRESIDENT

